

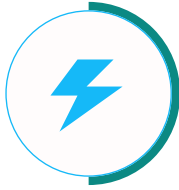


G-Power Nova 11

Smart EV Charging Solutions

The EV Charging Station redefines convenience by offering smooth and efficient vehicle charging anywhere it's needed. Its intelligent design ensures quick power delivery while maintaining safety and reliability. Built for modern lifestyles, it integrates seamlessly into residential, workplace, and commercial settings. Supporting eco-friendly innovation, it powers every journey toward a cleaner and smarter future.

Features & Advantages



Power & Performance

The G-Power Nova 11 delivers efficient and stable EV charging with reliable 3-phase power. It provides smooth current output for consistent charging performance. Ideal for both residential and commercial setups, ensuring dependable energy flow every time.



Smart & Portable Design

With a sleek wall-mounted design, it saves space and fits any environment. The bright LCD display and LED indicators make monitoring easy. Smart connectivity options enhance control and user convenience for everyday use.



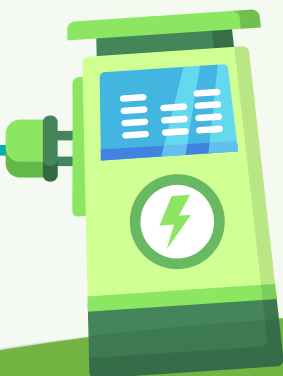
Safety & Protection

Built with IP65 protection, it performs safely even in harsh outdoor conditions. Multiple safeguards protect against overload, voltage fluctuation, and leakage. It ensures secure and uninterrupted operation for complete user confidence.



Environment & Efficiency

Designed to operate in all weather conditions, it delivers efficient performance in any climate. The natural air-cooling system maintains optimal function with minimal energy use. Ecofriendly and quiet, it supports sustainable and smart EV charging.



Applications



Residential EV Charging



Workplace EV Charging



Public EV Charging



Specifications

Model - NOVA 11

INPUT & OUTPUT

Input Voltage Range	415V/AC \pm 10%
Output Voltage Range	400V/AC \pm 10%
Output Current	16 A
Output Power	11 kW
Phase Line	3 Phase + Neutral + PE
Frequency	50/60 Hz

STRUCTURE DESIGN

Mounting Type	Wall
Charging Interface Type	Type 2
Output Port	Single
Cable Length	5 meter
WIFI / Bluetooth / 4G / LAN	Manual Setting
LCD Screen	4.3 inch
LED Indication	Yes
RFID CARD	Yes
Ocpp	1.6JSON

PROTECTION

Ingress Protection	IP65
RCD Protection	Yes
Dynamic Load Balancing	Yes
Earth Leakage Protection	Yes
Over/Under Voltage Protection	Yes
Over Load Protection	Yes
Lightning Protection	Yes
Grounding Protection	Yes

ENVIRONMENT

Operating Temperature	-30°C TO +55°C
Working Humidity	5% to 95%
Working Altitude	Upto 2000 m
Cooling Method	Natural Air Cooling

MECHANICAL

Dimensions	295*195*95.5 mm
Net Weight	6.86 kg
Gross Weight	7.90 kg