

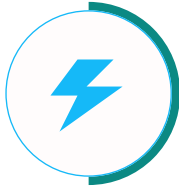


G-Power Nova 22

Smart EV Charging Solutions

The EV Charging Station delivers high-speed, intelligent, and dependable charging for all types of electric vehicles. Its smart features ensure efficient power management, reducing energy waste and charging time. Designed for durability and safety, it performs reliably in homes, offices, and public environments. Combining modern design with eco-friendly technology, it offers convenience, cost savings, and a step toward a cleaner, sustainable future.

Features & Advantages



Power & Performance

The G-Power Nova 22 delivers fast and efficient dual charging for electric vehicles. It ensures smooth and consistent power flow for reliable performance. Designed for both home and commercial use, it supports stable operation with minimal energy loss.



Smart & Portable Design

With a compact wall-mounted design, it fits perfectly in any space. The 5-inch LCD display and LED indicators provide real-time charging updates. Its smart connectivity options allow easy control and user-friendly operation.



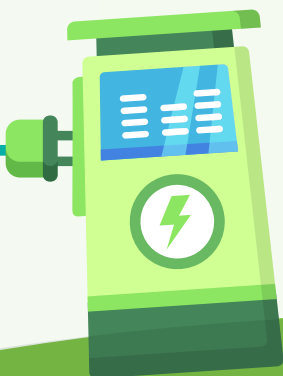
Safety & Protection

Equipped with IP54-rated protection, it performs safely even in challenging environments. Multiple safety systems defend against overload, voltage fluctuation, and leakage. It ensures dependable and secure charging every time.



Environment & Efficiency

Built to operate in all weather conditions, it delivers efficient and quiet performance. The natural air-cooling system maintains stability and extends lifespan. Eco-friendly and energy efficient, it promotes sustainable EV charging solutions.



Applications



Residential EV Charging



Workplace EV Charging



Public EV Charging



Specifications

Model - NOVA 22

INPUT & OUTPUT

Input Voltage Range	415V/AC \pm 10%
Output Voltage Range	400V/AC \pm 10%
Output Current	2*16 A (3P)
Output Power	22 kW
Phase Line	3 Phase + Neutral + PE
Frequency	50/60 Hz

STRUCTURE DESIGN

Mounting Type	Wall
Charging Interface Type	Type 2
Output Port	Dual
Cable Length	5 meter
WIFI / Bluetooth / 4G / LAN	Manual Setting
LCD Screen	5 inch
LED Indication	Yes
RFID CARD	Yes
OCP	1.6JSON

PROTECTION

Ingress Protection	IP54
RCD Protection	Yes
Dynamic Load Balancing	Yes
Earth Leakage Protection	Yes
Over/Under Voltage Protection	Yes
Over Load Protection	Yes
Lightning Protection	Yes
Grounding Protection	Yes

ENVIRONMENT

Operating Temperature	-30°C TO +55°C
Working Humidity	5% to 95%
Working Altitude	Upto 2000 m
Cooling Method	Natural Air Cooling

MECHANICAL

Dimensions	460*310*180 mm
Net Weight	28 kg
Gross Weight	33 kg