

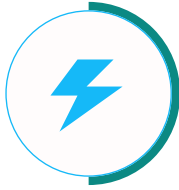


# G-Power Nova 3.7

## Smart EV Charging Solutions

The EV Charging Station delivers powerful, efficient, and reliable charging for all electric vehicles. Designed with advanced smart technology, it ensures safe, smooth, and intelligent operation for every user. Its modern and durable design makes it ideal for homes, businesses, and public areas. Supporting the shift toward cleaner energy, it empowers a sustainable and eco-friendly driving future.

# Features & Advantages



## Power & Performance

The G-Power Nova 3.7 delivers efficient and stable charging for electric vehicles. It ensures smooth energy flow and reliable performance in every session. Perfect for daily use, it provides consistent charging power with low energy loss.



## Smart & Portable Design

Designed for convenience, its compact and lightweight build makes it easy to carry anywhere. The bright display and simple interface allow quick operation and monitoring. It's a perfect solution for users seeking mobility and flexibility in EV charging.



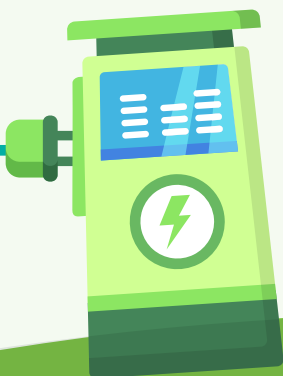
## Safety & Protection

Engineered with IP67 protection, it guarantees durability even in tough outdoor conditions. Multiple safety features prevent overload, leakage, and voltage fluctuations. This ensures safe, dependable, and worry-free charging every time.



## Environment & Efficiency

Built to perform in all weather, it operates efficiently from extreme cold to heat. Its natural air-cooling design maintains steady performance without extra power use. With quiet and ecofriendly operation, it supports sustainable and smart driving.



# Applications



**Residential EV Charging**



**Workplace EV Charging**



**Public EV Charging**



# Specifications

## Model - NOVA 3.7

### INPUT & OUTPUT

Input Voltage Range	230V/AC ±10%
Output Voltage Range	230V/AC ± 10%
Output Current	6/8/10/13/16 A
Output Power	3 kW
Phase Line	1 Phase + Neutral + PE
Frequency	50/60 Hz

### STRUCTURE DESIGN

Mounting Type	Portable
Charging Interface Type	UK 3-pin Socket Plug + Type 2
Output Port	Single
Cable Length	5 meter
WIFI / Bluetooth / 4G / LAN	NA
LCD Screen	0.96 inch
LED Indication	Yes
RFID CARD	No
OCP	1.6JSON

### PROTECTION

Ingress Protection	IP67
RCD Protection	Yes
Dynamic Load Balancing	NA
Earth Leakage Protection	Yes
Over/Under Voltage Protection	Yes
Over Load Protection	Yes
Lightning Protection	Yes
Grounding Protection	Yes

### ENVIRONMENT

Operating Temperature	-30°C TO +55°C
Working Humidity	5% to 95%
Working Altitude	< 2000 m
Cooling Method	Natural Air Cooling

### MECHANICAL

Dimensions	230*85*43 mm
Net Weight	2.1 kg
Gross Weight	2.6 kg