



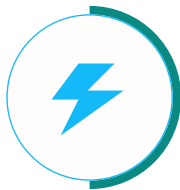
G-Power

AURA 120

Smart EV Charging Solutions

The EV Charging Station delivers advanced, high-performance charging solutions for modern electric vehicles. Designed for efficiency and reliability, it combines intelligent control, safety, and convenience in one compact system. Suitable for homes, businesses, and public spaces, it ensures fast and seamless charging anytime, anywhere. Built with a focus on innovation and sustainability, it drives the future of clean and smart electric mobility.

Features & Advantages



Power & Performance

The G-Power Aura 120 delivers fast, stable, and efficient charging for all EV types. It ensures smooth power delivery with reliable performance. Built for durability, it suits both commercial and industrial use.



Smart & Portable Design

Featuring dual CCS2 and CHAdeMO ports, it offers flexible charging options. The 7-inch LCD and RFID access provide simple, secure control. Smart connectivity through Wi-Fi, Bluetooth, 4G, and LAN ensures easy monitoring.



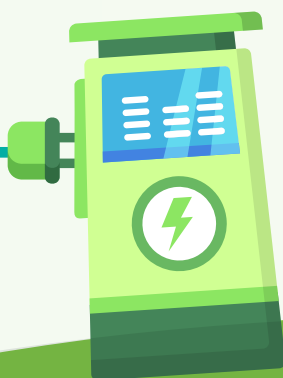
Safety & Protection

Designed with IP54 protection, it resists dust, water, and harsh conditions. It includes safeguards against overload, voltage issues, and lightning. Dynamic load balancing ensures safe and efficient operation.



Environment & Efficiency

Performs reliably in extreme temperatures and high humidity. Forced air cooling enhances efficiency and long-term stability. Eco-friendly and CE certified, it supports sustainable charging solutions.



Applications



Residential EV Charging



Workplace EV Charging



Public EV Charging



Specifications

Model - AURA 120

INPUT & OUTPUT

Input Voltage Range	415V/AC ±15%
Output Voltage Range	200-1000 V
Output Current	0-250 A
Output Power	120 kW
Phase Line	3 Phase + Neutral + PE
Frequency	50/60 Hz

STRUCTURE DESIGN

Mounting Type	Floor
Charging Interface Type	CCS2 +CHAdeMO
Output Port	Dual
Cable Length	5 meter
WIFI / Bluetooth / 4G / LAN	Manual Setting
LCD Screen	7 inch
LED Indication	Yes
RFID CARD	Yes
OCPP	1.6JSON

PROTECTION

Ingress Protection	IP54
RCD Protection	NO
Dynamic Load Balancing	Yes
Earth Leakage Protection	Yes
Over/Under Voltage Protection	Yes
Over Load Protection	Yes
Lightning Protection	Yes
Grounding Protection	Yes

ENVIRONMENT

Operating Temperature	-30°C TO +55°C
Working Humidity	5% to 95%
Working Altitude	< 2000 m
Cooling Method	Forced Air Cooling