



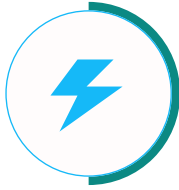
G-Power

AURA 60

Smart EV Charging Solutions

The EV Charging Station offers fast and reliable charging for all electric vehicles. It combines smart technology, safety, and energy efficiency for smooth operation. Built for homes, workplaces, and public use, it ensures convenient and eco-friendly charging every time. Designed for the future of mobility, it supports a cleaner and smarter driving experience.

Features & Advantages



Power & Performance

The G-Power Aura 60 offers powerful 60kW dual charging for fast, reliable performance. It supports a wide 200–1000V range and 3-phase 415V supply. Perfect for both private and commercial EV charging.



Smart & Portable Design

Designed with dual CCS2 and CHAdeMO ports, the Aura 60 offers flexibility for all EV types. The 7-inch LCD screen, LED indicators, and RFID access enable simple, secure, and smart operation in any setting.



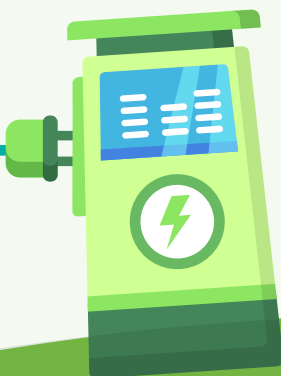
Safety & Protection

Built with IP54 protection for outdoor durability. Includes safeguards against overvoltage, overload, lightning, and grounding faults. Dynamic load balancing ensures stable and safe charging every time.



Environment & Efficiency

Engineered to perform reliably from extreme cold to high heat, the Aura 60 ensures durability and energy efficiency. Its eco-friendly design supports sustainable mobility while reducing maintenance and operating costs.



Applications



Residential EV Charging



Workplace EV Charging



Public EV Charging



Specifications

Model - AURA 60

INPUT & OUTPUT

Input Voltage Range	415V/AC ±15%
Output Voltage Range	200-1000 V
Output Current	0-200 A
Output Power	60 kW
Phase Line	3 Phase + Neutral + PE
Frequency	50/60 Hz

STRUCTURE DESIGN

Mounting Type	Floor
Charging Interface Type	CCS2 +CHAdeMO
Output Port	Dual
Cable Length	5 meter
WIFI / Bluetooth / 4G / LAN	Manual Setting
LCD Screen	7 inch
LED Indication	Yes
RFID CARD	Yes
OCP	1.6JSON

PROTECTION

Ingress Protection	IP54
RCD Protection	NO
Dynamic Load Balancing	Yes
Earth Leakage Protection	Yes
Over/Under Voltage Protection	Yes
Over Load Protection	Yes
Lightning Protection	Yes
Grounding Protection	Yes

ENVIRONMENT

Operating Temperature	-30°C TO +55°C
Working Humidity	5% to 95%
Working Altitude	< 2000 m
Cooling Method	Forced Air Cooling

MECHANICAL

Dimensions	1600*600*200 mm
Net Weight	160 kg
Gross Weight	185 kg