



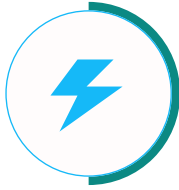
G-Power

AURA 80

Smart EV Charging Solutions

The EV Charging Station is a next-generation solution built for efficient, reliable, and intelligent electric vehicle charging. Designed with advanced safety and smart connectivity, it ensures seamless performance across homes, workplaces, and public spaces. Combining innovation with sustainability, it powers a cleaner and smarter future of mobility.

Features & Advantages



Power & Performance

The G-Power Aura 80 delivers fast, efficient, and stable EV charging. It ensures smooth power flow and reliable performance for every charge. Ideal for both commercial and industrial applications.



Smart & Portable Design

Built with a modern, compact floor-mounted design, it saves space while maintaining strength and durability. Dual charging ports allow two vehicles to charge simultaneously with ease. The intuitive LCD screen and RFID access make operation simple and user-friendly.



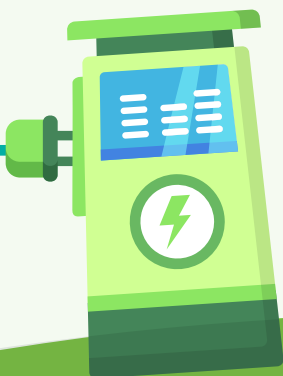
Safety & Protection

Built with IP54 protection, it resists dust, water, and outdoor conditions. It includes overload, voltage, lightning, and grounding protection. Dynamic load balancing ensures safe and stable operation.



Environment & Efficiency

Designed to perform in challenging climates, it operates smoothly from cold to hot conditions. The advanced cooling system maintains consistent performance and prevents overheating. Energyefficient and eco-friendly.



Applications



Residential EV Charging



Workplace EV Charging



Public EV Charging



Specifications

Model - AURA 80

INPUT & OUTPUT

Input Voltage Range	415V/AC ±15%
Output Voltage Range	200-1000 V
Output Current	0-250 A
Output Power	80 kW
Phase Line	3 Phase + Neutral + PE
Frequency	50/60 Hz

STRUCTURE DESIGN

Mounting Type	Floor
Charging Interface Type	CCS2 +CHAdeMO
Output Port	Dual
Cable Length	5 meter
WIFI / Bluetooth / 4G / LAN	Manual Setting
LCD Screen	7 inch
LED Indication	Yes
RFID CARD	Yes
OCCP	1.6JSON

PROTECTION

Ingress Protection	IP54
RCD Protection	NO
Dynamic Load Balancing	Yes
Earth Leakage Protection	Yes
Over/Under Voltage Protection	Yes
Over Load Protection	Yes
Lightning Protection	Yes
Grounding Protection	Yes

ENVIRONMENT

Operating Temperature	-30°C TO +55°C
Working Humidity	5% to 95%
Working Altitude	< 2000 m