



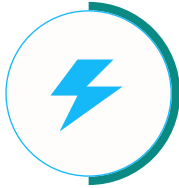
G-POWER

INFINITY 160

Smart EV Charging Solutions

The Smart EV Charging Station delivers fast, reliable, and intelligent charging for all electric vehicles. Designed for both residential and commercial use, it ensures safe and efficient performance with advanced connectivity features. Its sleek and durable design allows seamless operation in any environment. Built for the future, it supports the global transition toward cleaner and smarter transportation.

Features & Advantages



Power & Performance

The G-Power Infinity 160 delivers fast, stable, and efficient charging for all EV types, ensuring reliable performance in any environment.



Smart & Portable Design

Featuring dual CCS2 and CHAdeMO ports with a 7-inch display and smart connectivity, it offers simple, flexible, and intelligent operation.



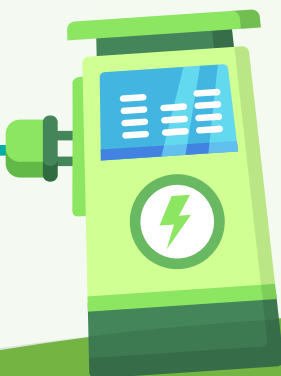
Safety & Protection

Built with full electrical protection and dynamic load balancing, it ensures safe, stable, and dependable charging every time.



Environment & Efficiency

Designed for all-weather use with efficient cooling, it's eco-friendly, durable, and certified for long-lasting performance.



Applications



Residential EV Charging



Workplace EV Charging



Public EV Charging



Specifications

Model - Infinity 160

INPUT & OUTPUT

Input Voltage Range	415V/AC \pm 15%
Output Voltage Range	200-1000 V
Output Current	0-250 A
Output Power	160 kW
Phase Line	3 Phase + Neutral + PE
Frequency	50/60 Hz

STRUCTURE DESIGN

Mounting Type	Floor
Charging Interface Type	CCS2 +CHAdeMO
Output Port	Dual
Cable Length	5 meter
WIFI / Bluetooth / 4G / LAN	Manual Setting
LCD Screen	7 inch
LED Indication	Yes
RFID CARD	Yes
OCPP	1.6JSON

PROTECTION

Ingress Protection	IP54
RCD Protection	NO
Dynamic Load Balancing	Yes
Earth Leakage Protection	Yes
Over/Under Voltage Protection	Yes
Over Load Protection	Yes
Lightning Protection	Yes
Grounding Protection	Yes

ENVIRONMENT

Operating Temperature	-30°C TO +55°C
Working Humidity	5% to 95%
Working Altitude	< 2000 m
Cooling Method	Forced Air Cooling